

close status

No.	Drawings No.	Name	Material	Unit weight(kg)	QTY.	Note
1	50078-1	Weld ring	Q235	1.650	1	pipe22x2
2	50078-2	Leg	Q235	1.284	3	pipe32x2
3	50078-3	Cap	Q235	0.590	1	
4	50078-4	Base	Q235	4.372	1	
5	50078-5	Pestle	Q235	1.360	1	
6		GB_FASTENER_BOLT_HHBC M8X120-N	A2-70		1	
7		GB_FASTENER_BOLT_HHBC M6X45-N	A2-70		7	
8		GB_HEXAGON_LOCK_TYPE1 O M6-N	A2-70		7	
9		GB_HEXAGON_LOCK_TYPE1 O M8-N	A2-70		1	

	SIGNATURE	DATE
DRAWN	Chris	2023.9.8
CHECKED		
ENG.APPR		
MFG.APPR		
Q.A		
DO NOT SCALE DRAWING		WEIGHT(KG): 12.000

**SINORTEK**

## Wool packing barcket

**50078**

Rev. **A**

DWG.NO

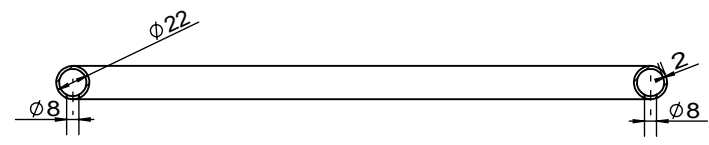
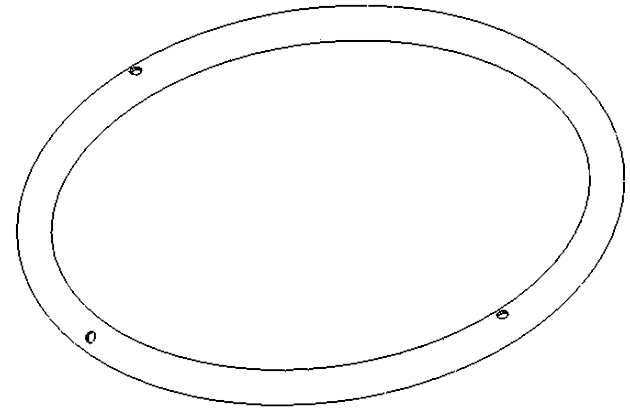
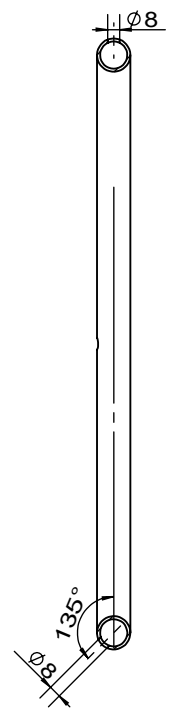
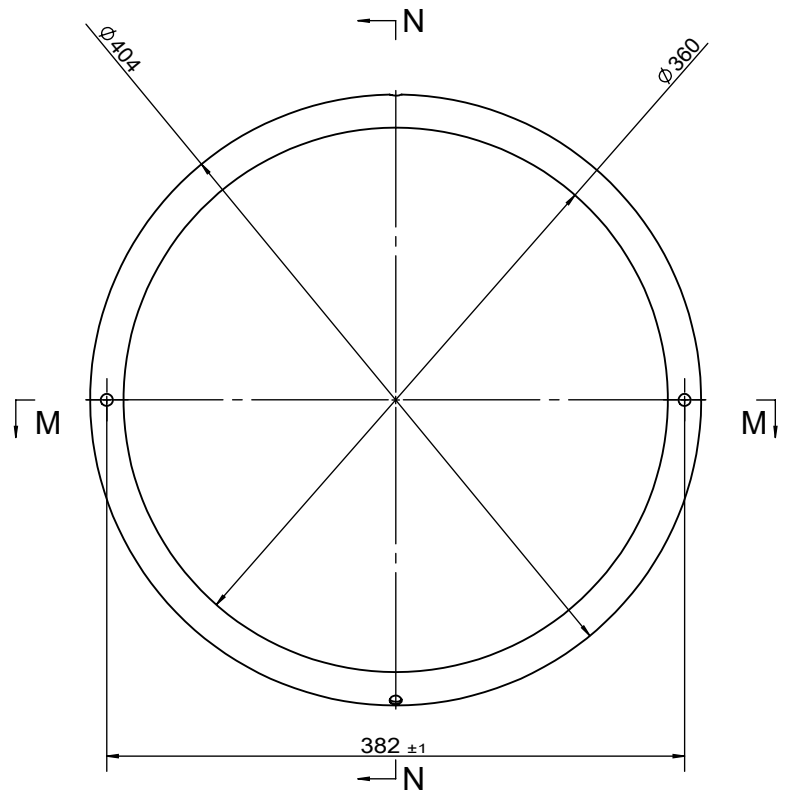
SCALE 1:20

SHEET OF



1 2 3 4 5 6

REV	MODIFICATION	DATE	DRN/CHKD



**Notes:**

1. Tolerance unless otherwise specified follow ISO 2768-m.
2. Material certificate according to NS-EN10204 3.1;
3. Break sharp edges.

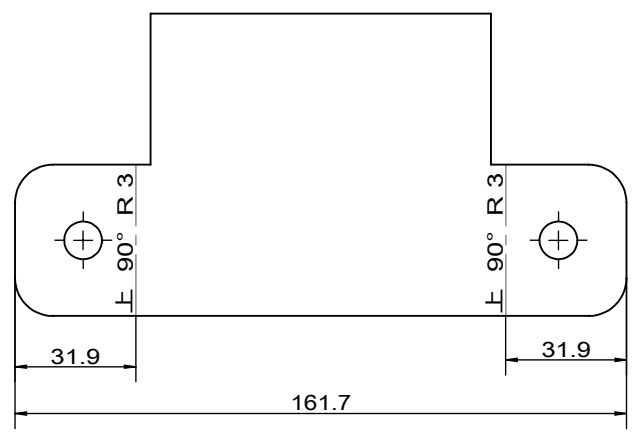
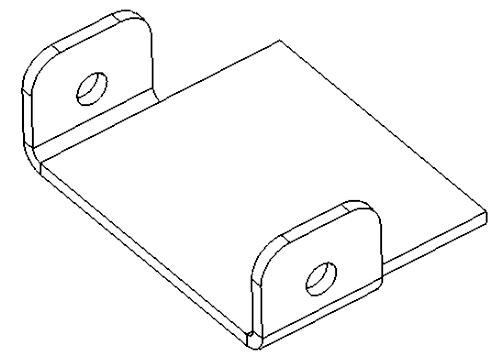
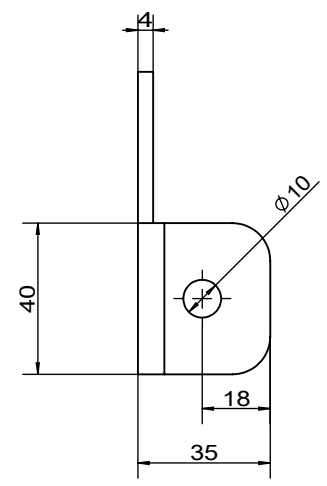
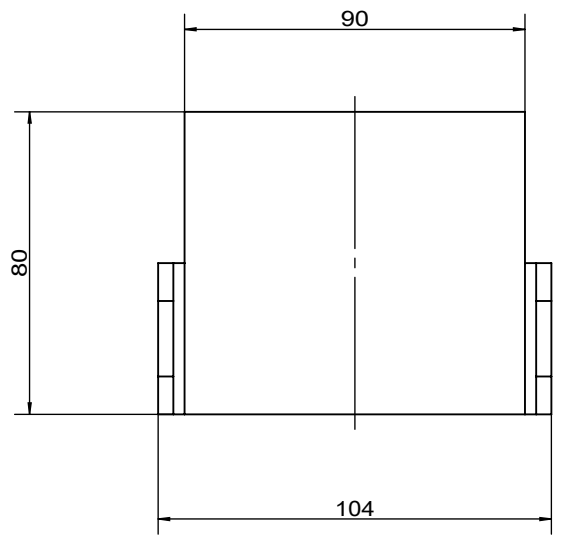
	SIGNATURE	DATE	
DRAWN	Chris	2023/9/8	
CHECKED			
ENG.APPR			
MFG.APPR			MATERIAL:
Q.A.			Q235



**Ring**

DWG.NO	50078-1-1	REV	A
--------	-----------	-----	---

REV	MODIFICATION	DATE	DRN/CHKD



**Notes:**

1. Tolerance unless otherwise specified follow ISO 2768-m.
2. Material certificate according to NS-EN10204 3.1;
3. Break sharp edges.

	SIGNATURE	DATE	
DRAWN	Chris	2023/9/4	
CHECKED			
ENG.APPR			
MFG.APPR			MATERIAL:
Q.A.			Q235

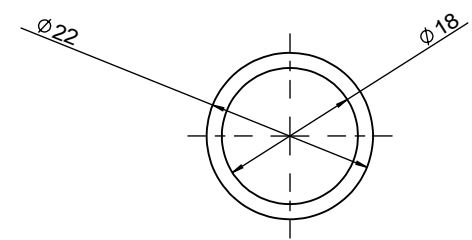
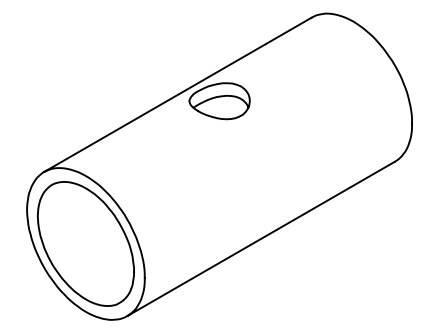
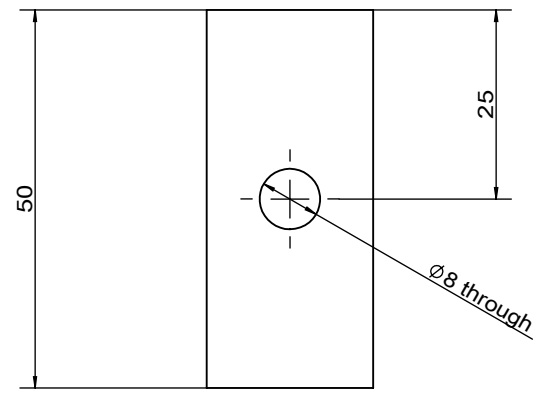


**Plate**

DWG.NO	50078-1-2	REV	A
--------	-----------	-----	---


REV	MODIFICATION	DATE	DRN/CHKD

others  $\nabla$  6.3



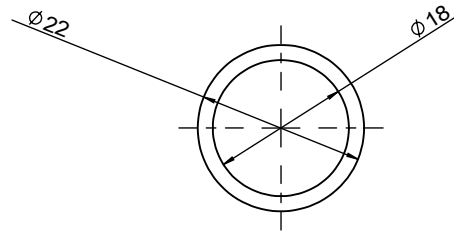
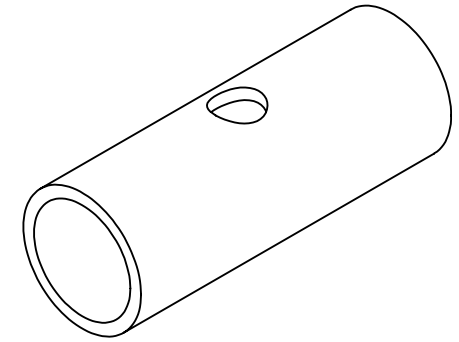
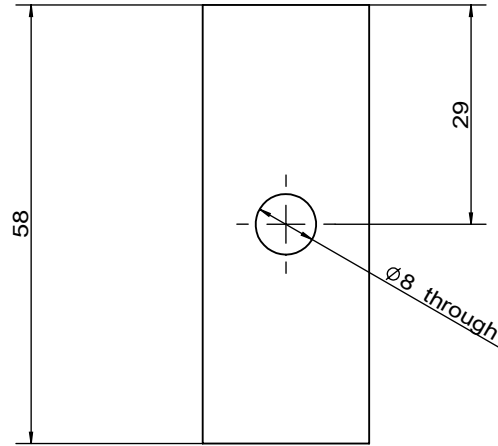
**Notes:**

1. Tolerance unless otherwise specified follow ISO 2768-m.
2. Material certificate according to NS-EN10204 3.1;
3. Break sharp edges.

	SIGNATURE	DATE		  <b>Weld pipe-S</b>	DWG.NO	<b>50078-1-3</b>	REV A
DRAWN	Chris	2023/9/4					
CHECKED							
ENG.APPR							
MFG.APPR			MATERIAL:				
Q.A.			Q235				
DO NOT SCALE DRAWING			WEIGHT(KG): 0.05	SCALE:1:1	SHEET OF		

REV	MODIFICATION	DATE	DRN/CHKD

others  $\nabla$  6.3



**Notes:**

1. Tolerance unless otherwise specified follow ISO 2768-m.
2. Material certificate according to NS-EN10204 3.1;
3. Break sharp edges.

	SIGNATURE	DATE	
DRAWN	Chris	2023/9/8	
CHECKED			
ENG.APPR			
MFG.APPR			MATERIAL:
Q.A.			Q235



**Weld pipe-L**

DWG.NO	REV
50078-1-4	A

DO NOT SCALE DRAWING

WEIGHT(KG): 0.06

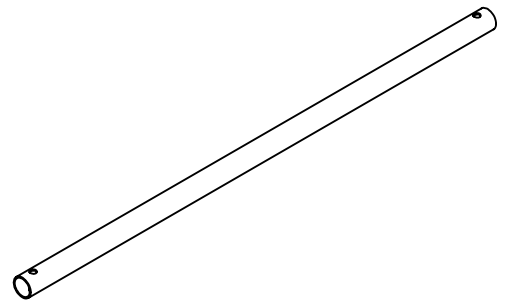
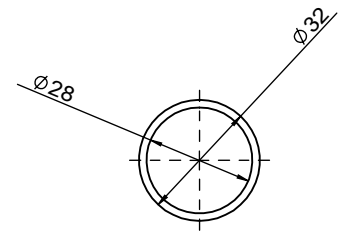
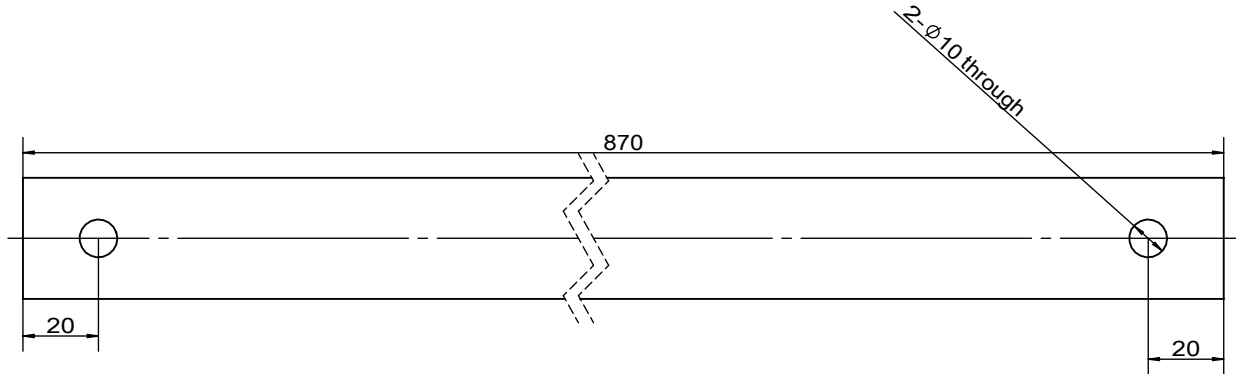
SCALE:1:1

SHEET OF

1 2 3 4 5 6

REV	MODIFICATION	DATE	DRN/CHKD

others  $\nabla$  <sup>6.3</sup>



**Notes:**

- 1.Tolerance unless otherwise specified follow ISO 2768-m.
- 2.Material certificate according to NS-EN10204 3.1;
- 3.Break sharp edges.
- 4.HDG,thickness $\geq$ 55 $\mu$ m,average 70 $\mu$ m.

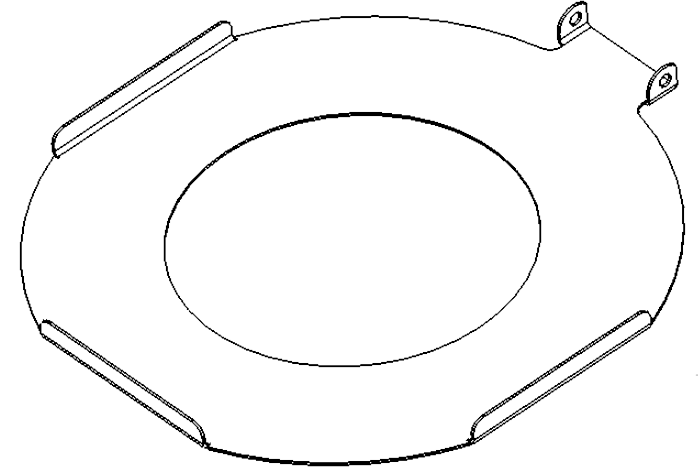
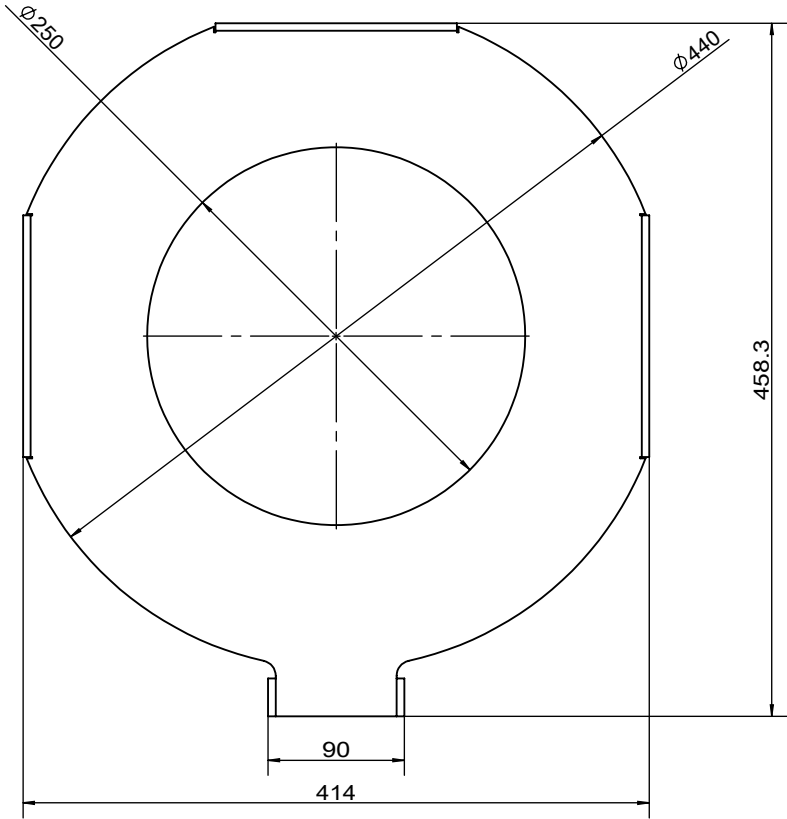
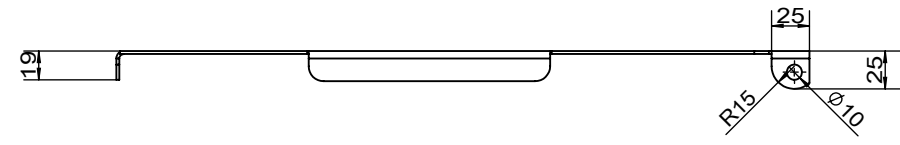
	SIGNATURE	DATE	
DRAWN	Chris	2023/9/8	
CHECKED			
ENG.APPR			
MFG.APPR			MATERIAL:
Q.A.			Q235



**Leg**

DWG.NO	50078-2	REV	A
--------	---------	-----	---

REV	MODIFICATION	DATE	DRN/CHKD



**Notes:**

- 1. Tolerance unless otherwise specified follow ISO 2768-m.
- 2. Material certificate according to NS-EN10204 3.1;
- 3. Break sharp edges.
- 4. HDG, thickness  $\geq 55\mu\text{m}$ , average  $70\mu\text{m}$ .

	SIGNATURE	DATE	
DRAWN	Chris	2023/9/8	
CHECKED			
ENG.APPR			
MFG.APPR			MATERIAL:
Q.A.			Q235

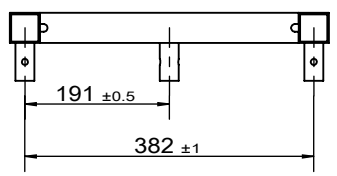
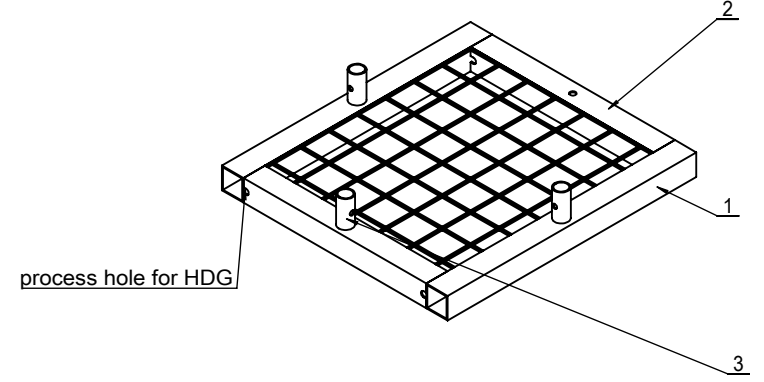
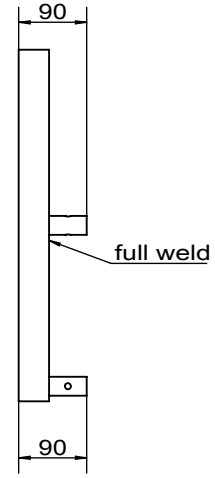
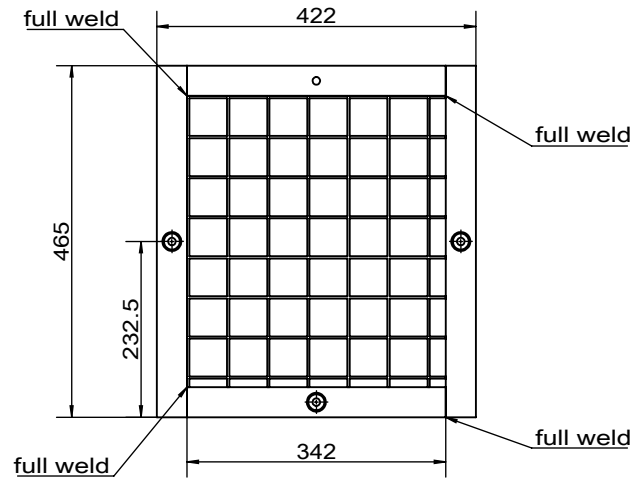


**Cap**

DWG.NO	50078-3	REV	A
--------	---------	-----	---




REV	MODIFICATION	DATE	DRN/CHKD



No.	Drawings No.	Name	Material	Unit weight(kg)	QTY.	Note
1	50078-4-1	Square pipe-L	Q235	1.11	2	40X40 X2
2	50078-4-2	Square pipe-S	Q235	0.81	2	40X40 X2
3	50078-4-3	Weld pipe-S	Q235	0.06	3	
4	50078-4-4	Iron mesh	Q235	0.37	1	

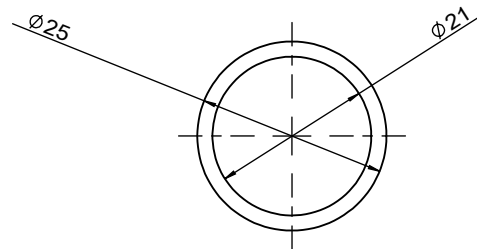
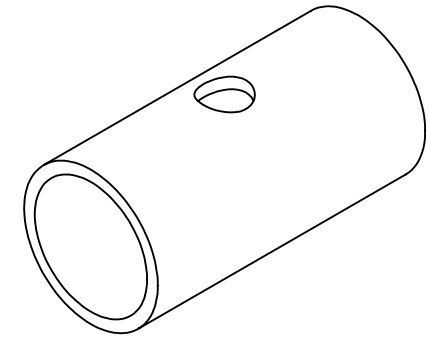
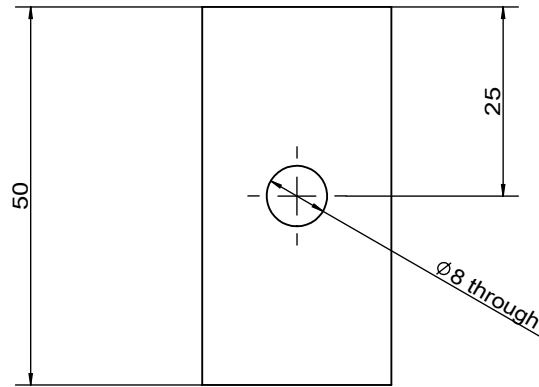
**Notes:**

- 1. Tolerance unless otherwise specified follow ISO 2768-m.
- 2. Material certificate according to NS-EN10204 3.1;
- 3. Break sharp edges.
- 4. HDG, thickness ≥ 55µm, average 70µm.

SIGNATURE	DATE	  <h1>Base</h1>			
DRAWN	Chris				
CHECKED					
ENG.APPR					
MFG.APPR					
Q.A.		MATERIAL:			
		DWG.NO	50078-4	REV	A

REV	MODIFICATION	DATE	DRN/CHKD

others  $\nabla$  6.3



**Notes:**

1. Tolerance unless otherwise specified follow ISO 2768-m.
2. Material certificate according to NS-EN10204 3.1;
3. Break sharp edges.

	SIGNATURE	DATE				
DRAWN	Chris	2023/9/8				
CHECKED				<p style="text-align: center; font-size: 24px; font-weight: bold;">Weld pipe-S</p>		
ENG.APPR						
MFG.APPR						
Q.A.				MATERIAL:	DWG.NO	
				Q235		
					50078-4-3	REV
						A

1 2 3 4 5 6

A

B

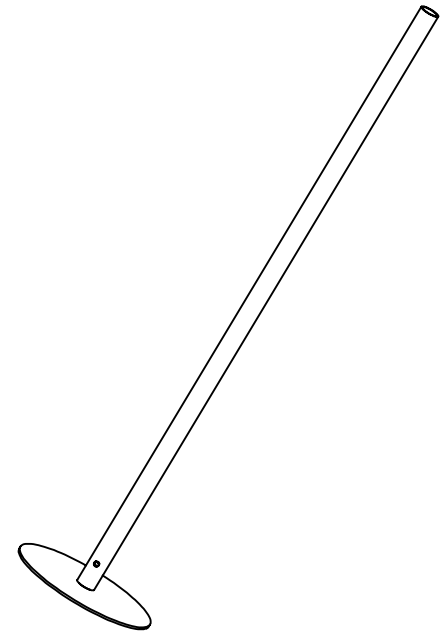
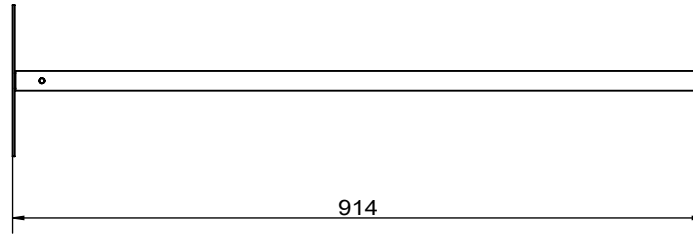
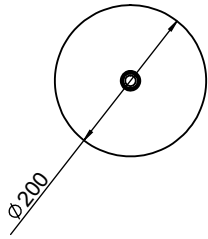
C

D

1 2 3 DO NOT SCALE DRAWING WEIGHT(KG): 0.06 SCALE:1:1 SHEET OF

REV	MODIFICATION	DATE	DRN/CHKD

others  $\nabla$  <sup>6.3</sup>

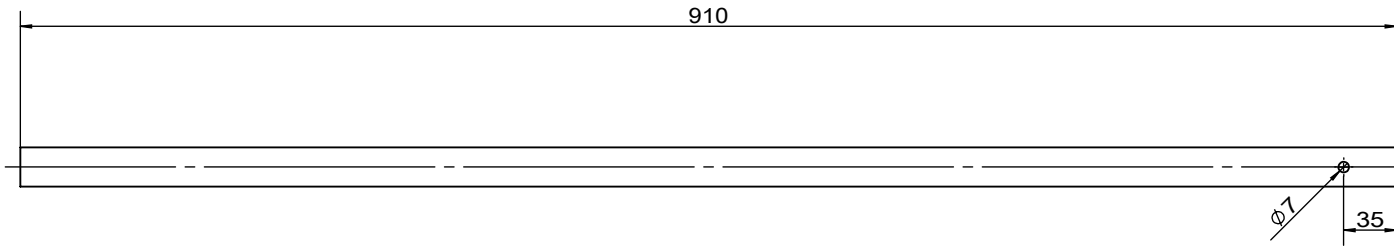


No.	Drawings No.	Name	Material	Unit weight(kg)	QTY.	Note
1	50078-5-1	Handle pipe	Q235	1.08	1	ø26X2
2	50078-5-2	pestle head	5052	0.28	1	

	SIGNATURE	DATE		DWG.NO <b>50078-5</b>	REV <b>A</b>
DRAWN	Chris	2023/9/21			
CHECKED					
ENG.APPR					
MFG.APPR					
Q.A.					

REV	MODIFICATION	DATE	DRN/CHKD

others  $\nabla$  6.3



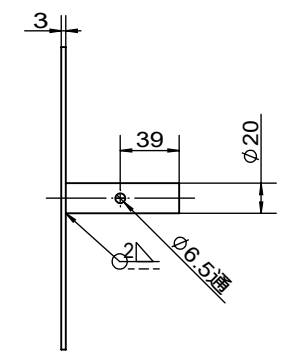
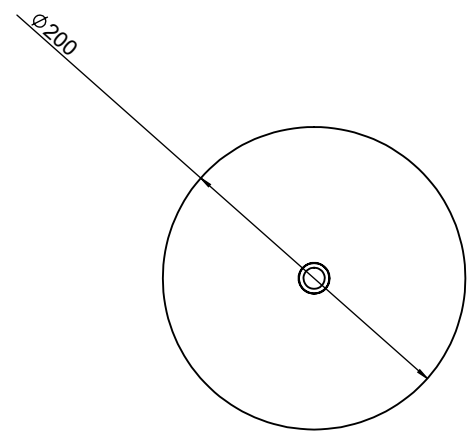
**Notes:**

- 1.Tolerance unless otherwise specified follow ISO 2768-m.
- 2.Material certificate according to NS-EN10204 3.1;
- 3.Break sharp edges.
- 4.HDG,thickness $\geq 55\mu\text{m}$ ,average  $70\mu\text{m}$ .

	SIGNATURE	DATE			
DRAWN	Chris	2023/9/21			
CHECKED				<h1>Handle pipe</h1>	
ENG.APPR					
MFG.APPR					
Q.A.				MATERIAL:	
				Q235	
DO NOT SCALE DRAWING			WEIGHT(KG): 1.08	SCALE:1:10	
				DWG.NO	REV
				50078-5-1	A
				SHEET OF	

REV	MODIFICATION	DATE	DRN/CHKD


others  $\nabla$  6.3



**Notes:**

- 1.Tolerance unless otherwise specified follow ISO 2768-m.
- 2.Material certificate according to NS-EN10204 3.1;
- 3.Break sharp edges.

No.	Drawings No.	Name	Material	Unit weight(kg)	QTY.	Note
1	50078-5-2-1	Round plate	5052	0.25	1	
2	50078-5-2-2	AL pipe	5052	0.03	1	Ø20X3 L=78

	SIGNATURE	DATE		 <p style="font-size: 2em; font-weight: bold;">pestle head</p>	
DRAWN	Chris	2023/9/21			
CHECKED					
ENG.APPR					
MFG.APPR			MATERIAL:		
Q.A.			5052		
			DWG.NO	50078-5-2	REV A